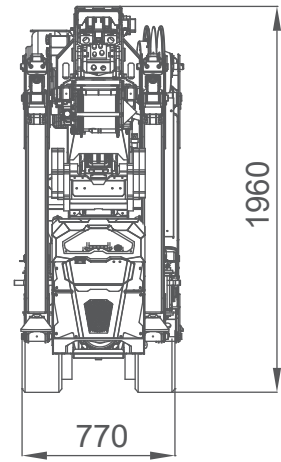
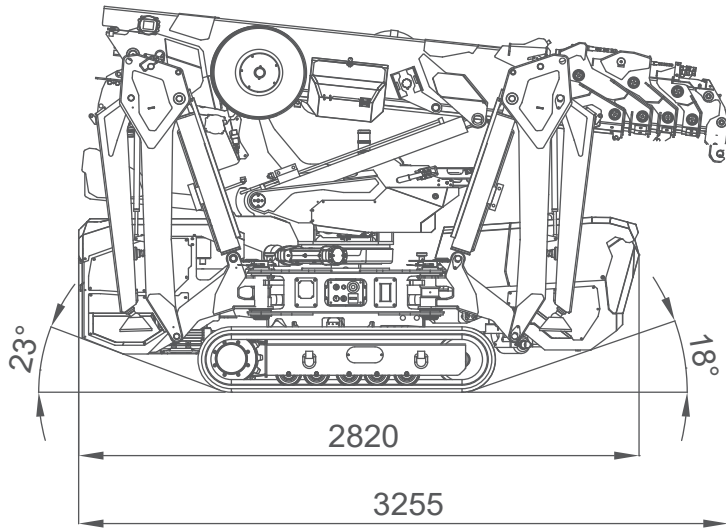


XP532

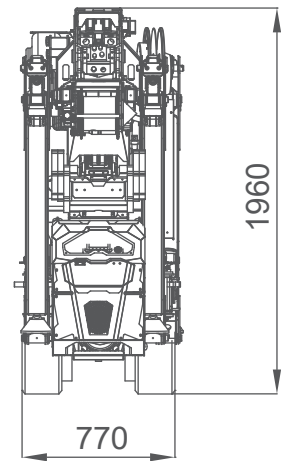
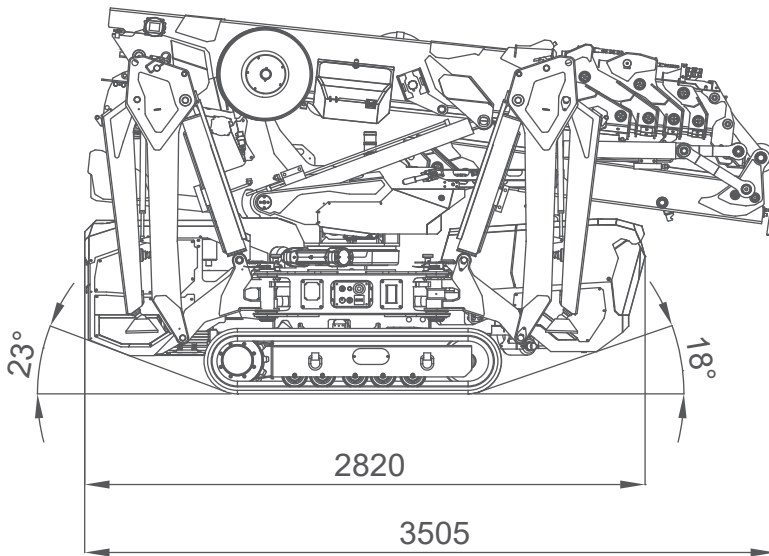
Datos Técnicos



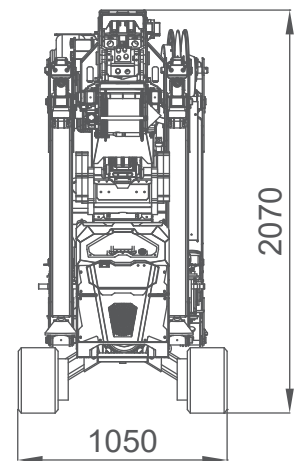
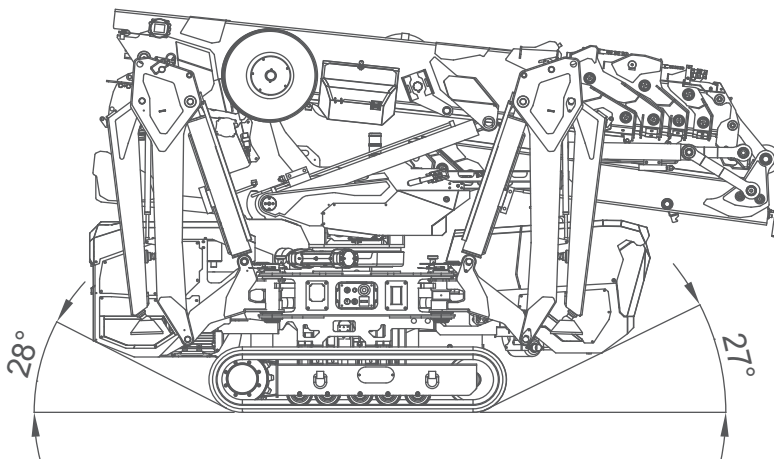
DIMENSIONES



JIB MOUNTED

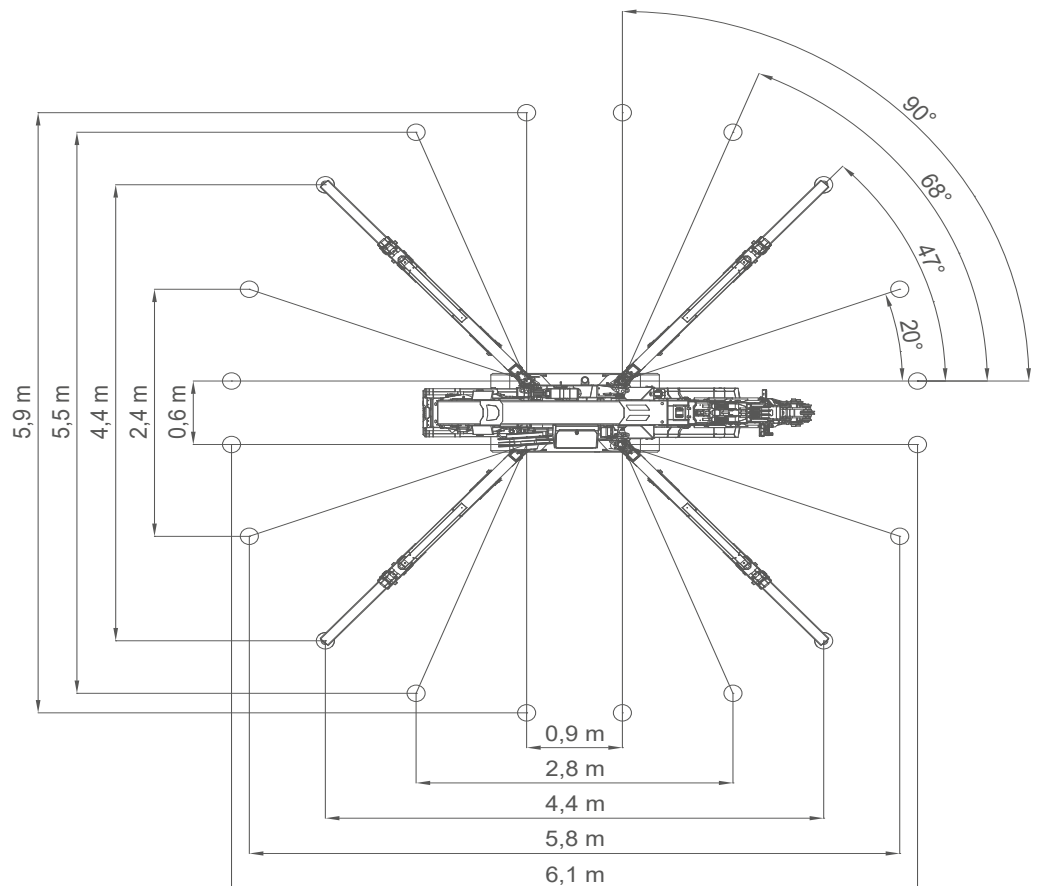
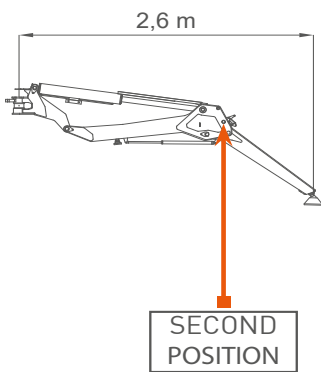
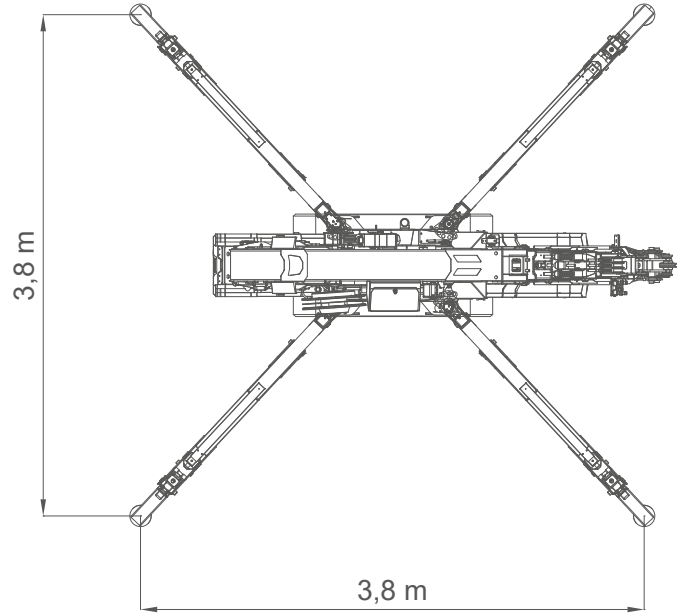
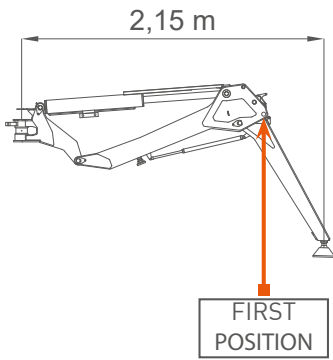


EXTENDED TRACKS




















[mm]

DIMENSIONES



INFORMACION

		Name/ version	kg*
WEIGHTS	 Crane	CDH, CL, CL2	2520
	 Winch	W800.6	52
	 Hookblock	SINGLE FALL	20
		MULTIPLE FALL	49
	 Power Pack	1-PHASE POWERPACK	52
		3-PHASE POWERPACK	63
	 Jib	JIB1200GX	50
		JIB1000.2H1MX	210
		MANUAL EXTENSION	14
		PULLEY HEAD	8
 Grabber	JIB500GR	217	
 Outriggers mats	OM400	17	

ENGINE	 Engine	KUBOTA D902-E4B		
	kW Power	16,1kW 22HP		
	 Fuel	DIESEL		
ELECTRIC	 Tank	L	10	
	 Lithium Battery	CL: 24V 300Ah		
	kW Power	24V-3F 5,5kW 7,5HP		
	 Lithium Battery	CL2: 48V 200Ah		
HYDRAULIC	kW Power	48V-3F 7,0kW 9,5HP		
	 Hydraulic Oil	ISO 6743-4:HFDU with VG46 viscosity class		
		Working temp	<70°C	
		L	40	
	MOVEMENTS	 Travel Speed	km/h	CDH: 2,7 CL, CL2 : 1,8
 Gradeability		20° [36%] [†]		
 Track Load		kg/cm ²	0,63	
 Outrigger Load		kg	3000 [‡]	
 Working Angle		0°/80°		
		s	30	
 Slewing		360°		
		rpm	0,85	
 Boom Telescoping	m	2,5 - 10,8		
	s	40		

*: Dry weight

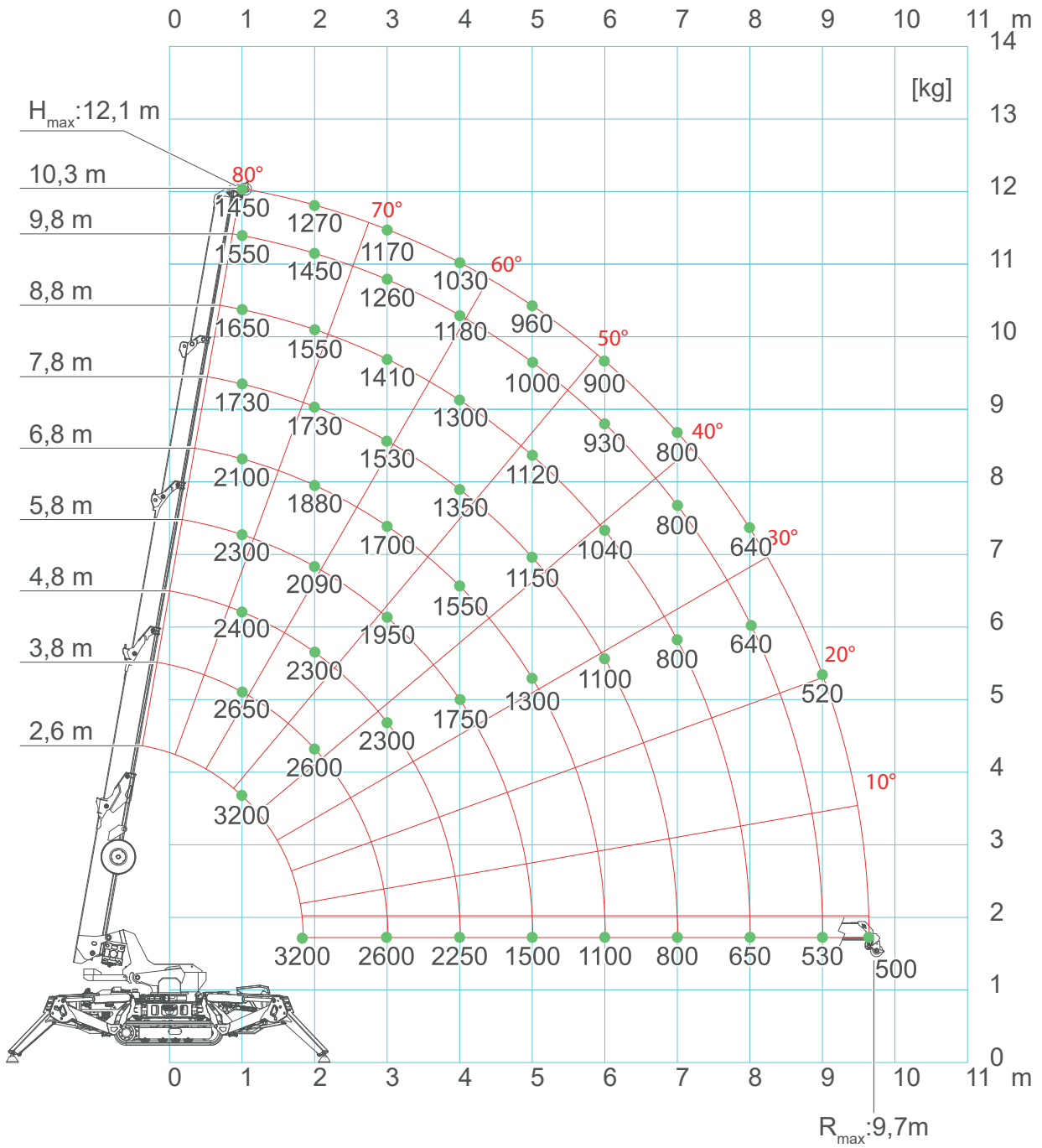
†: Engine working limit

‡: Static lifting

GEAR WINCH	Layer	Max line pull	Standard rope speed	Highest rope speed
		kg	m/min	m/min
	1	785		25
	2	730		27
	3	680		29
	4	640		31
	5	600		33
ROPE	Wire rope	∅	Total length	Max load
		mm	m	kg
	19x7 right lang lay Non rotating	7	81	4975
PISTON WINCH	Layer	Max line pull	Standard rope speed	Highest rope speed
		kg	m/min	m/min
	1	980*		16
	2	910*		17
	3	860*		19
4	810*		20	
ROPE	Wire rope	∅	Total length	Max load
		mm	m	kg
	19x7 right lang lay Non rotating	7	68	4723
HOOK BLOCK	Load	N° of		Block type
	kg	Sheaves	Lines	
	3200	2	4	Multiple fall block
	2400	1	3	
	1600	1	2	
800	-	1	Single fall block	

*: LMI limited at 800 kg

SPX532 - PLUMA PRINCIPAL



SPX532 - JIB500GR

